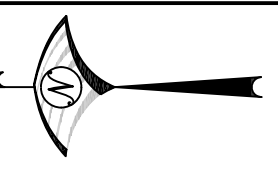


PROJECT
SITE VICINITY
(VICINITY MAP HERE)



NOT TO SCALE

BENCH MARK:
CO. B.M. XX-XX ELEV. XXX.XX (U.S.G.S.)

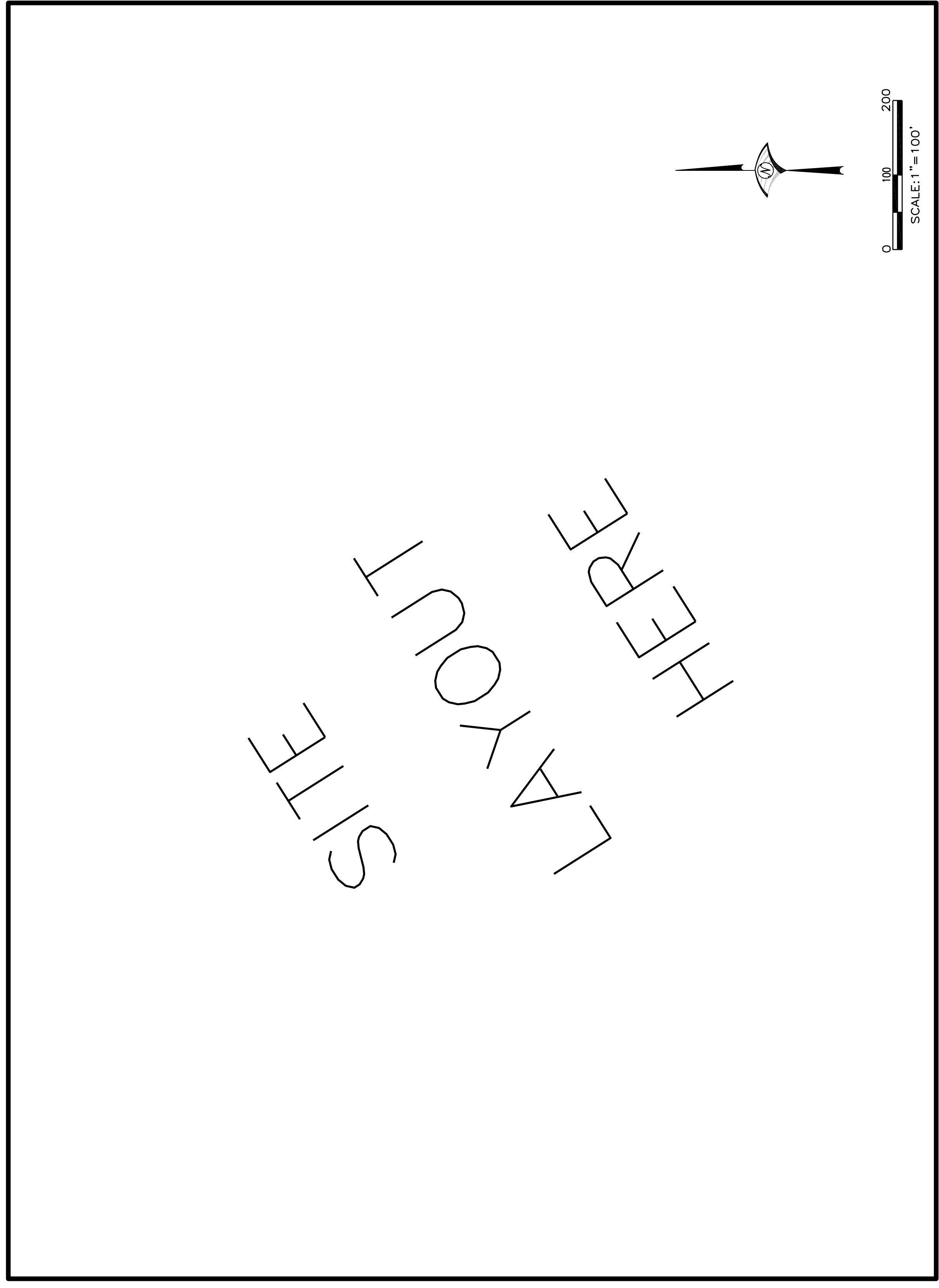
CALIFORNIA
COORDINATE
N XXX,XXX E XXX,XXX

APN: XXX-XXXX-XXX

PROPOSED	EXISTING

GENERAL NOTES
CONTRACTOR RESPONSIBILITIES: CONSTRUCTION CONTRACTOR AGREES THAT IN ACCORDANCE WITH GENERALLY ACCEPTED CONSTRUCTION PRACTICES, CONSTRUCTION CONTRACTOR WILL BE REQUIRED TO ASSUME SOLE AND COMPLETE RESPONSIBILITY FOR JOB SITE CONDITIONS DURING THE COURSE OF CONSTRUCTION OF THE PROJECT, INCLUDING SAFETY OF ALL PERSONS AND PROPERTY; THAT THIS REQUIREMENT SHALL BE MADE TO CONTRACTOR AND SHALL NOT BE DELEGATED TO ANY OTHER PARTY. CONTRACTOR SHALL BE RESPONSIBLE FOR OBTAINING ALL NECESSARY PERMITS AND APPROVALS FROM THE CITY OF RANCHO CORDOVA AND THE DESIGN CONSULTANT. CONTRACTOR SHALL BE RESPONSIBLE FOR OBTAINING ALL NECESSARY PERMITS AND APPROVALS FROM THE CITY OF RANCHO CORDOVA AND THE DESIGN CONSULTANT. CONTRACTOR SHALL BE RESPONSIBLE FOR OBTAINING ALL NECESSARY PERMITS AND APPROVALS FROM THE CITY OF RANCHO CORDOVA AND THE DESIGN CONSULTANT.

IMPROVEMENT PLANS FOR
JOB TITLE
UNIT OR VILLAGE
CITY OF RANCHO CORDOVA
CALIFORNIA



SITE PLAN
SCALE 1"=100'

- S H E E T I N D E X**
- TITLE SHEET
 - GENERAL NOTES
 - SECTIONS AND DETAILS
 - PLAN PROFILE SHEET
 - PLAN PROFILE SHEET
 - GRADING NOTES AND DETAILS
 - GRADING PLAN
 - EROSION & SEDIMENT CONTROL NOTES AND DETAILS
 - EROSION AND SEDIMENT CONTROL PLAN
 - WATER PLAN
 - WATER PLAN
 - STREET LIGHTING PLAN
 - STREET LIGHTING DETAILS
 - SOUNDWALL NOTES & DETAILS
 - SOUNDWALL NOTES & DETAILS

OWNER/DEVELOPER
(OWNER/DEVELOPER)
(ADDRESS)
(CITY), CA (ZIP)
CONTACT:
PHONE:

APPROVED BY: _____
CITY OF RANCHO CORDOVA PUBLIC WORKS DATE _____

APPROVED BY: _____
SACRAMENTO METRO FIRE DATE _____

PLAN CHECKER: _____
SACRAMENTO AREA SEWER DISTRICT DATE _____

O.K. TO SUBMIT FOR MANHOLE NUMBERING

SEWER INSPECTOR _____ DATE _____

APPROVED BY: _____
SAC. COUNTY WATER AGENCY DATE _____

UTILITY REPRESENTATIVES		PHONE
U.S.A.	(CONTACT NAME)	(XXX) XXX-XXXX
GAS	P.G.& E.	(XXX) XXX-XXXX
ELECTRICITY	S.M.U.D.	(XXX) XXX-XXXX
TELEPHONE	PACIFIC BELL	(XXX) XXX-XXXX
WATER	SACRAMENTO COUNTY	(XXX) XXX-XXXX
FIRE	SAC. METRO FIRE	(XXX) XXX-XXXX
SEWER	SACRAMENTO COUNTY	(XXX) XXX-XXXX
DRAINAGE	SACRAMENTO COUNTY	(XXX) XXX-XXXX
T.V. CABLE	AT&T	(XXX) XXX-XXXX

WDID CONTROL NO. FOR N.O.I. = XX	XXX	TONS
ASPHALT CONCRETE (AC)	XXXX	TONS
AGGREGATE BASE (AB)		TONS

CITY OF RANCHO CORDOVA
DEPARTMENT OF PUBLIC WORKS
(PROJECT NAME HERE)

Assessors Parcel Number: XXX-XXXX-XXX
Map Coordinates: N. XXX,XXX/E. XXX,XXX
Recommended for Approval: _____
Drainage Approved: _____
Checked By: _____

ENGINEERS STAMP
PRELIMINARY
DATE: _____